



Straw Hats Brochure



About us...

Comercializadora Intercomex is a Collective Interest Society (BIC). We have developed a business model that allows us to improve the quality of life of the primary producer and their production environment. We aim to contribute to the solution of social issues by supporting initiatives from the Indigenous population, single mothers, individuals with disabilities, crop substitution, and conflict victims.

On this occasion we want to present our brochure of straw hats made by local artisans.

We have the support and the experience of more than 35 years in the production of toquilla straw hats. The artisans are part of the second generation in the production of hats that combines experience and artisanal legacy with fashion and innovation.

We have exported hats to the USA, Chile, Panama, Canada, Ecuador, Spain, Mexico, Peru and Puerto Rico.



USA



CANADÁ



CHILE



ECUADOR



ESPAÑA



MÉXICO



PANAMÁ



PERÚ



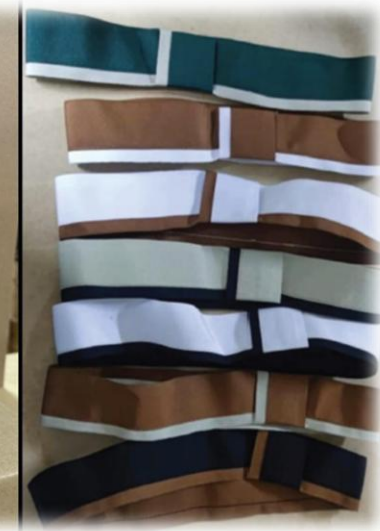
PUERTO RICO



About us...

The value of our toquilla straw hats is given according to the combination of 3 factors:

- Quality of the fabric (matched, plain, breeze)
- Hat brim size (from 5 cm to 10.5 cm)
- Ornaments (ribbons or straps; from low to high complexity)



Australian Hat

Characteristics:

Half brim hat between 8 to 8.5 cm (wing size)

Available tone: white, brown and beige

Big brimmed hat 10.5cm (wing size)

Available tone; beige

Cup 11.5 cm

Measurements between sizes:

S 54cm - 55cm

M 55.5cm - 56.5cm

L 57cm - 58.5cm

XL 59cm - 60cm

Ornaments:

We have different decorations, including ribbons and straps to combine with anyone of our references



Australian Hat



Classic or Panama Hat

Characteristics:

Small brimmed hat between 5 to 6 cm (wing size)

Available tone: white, brown and beige

Cup 11.5 cm

Measurements between sizes:

S 54 cm - 55 cm

M 55.5 cm - 56.5 cm

L 57 cm - 58.5 cm

XL 59 cm - 60 cm

Ornaments:

We have different decorations, including ribbons and straps to combine with anyone of our references



Gambler Hat

Characteristics:

Half brim hat between 8 to 8.5 cm (wing size)
Available tone: white, brown and beige

Big brimmed hat 10.5cm (wing size)
Available tone; beige

Cup 11.5 cm

Measurements between sizes:

S 54cm - 55cm

M 55.5cm - 56.5cm

L 57cm - 58.5cm

XL 59cm - 60cm

Ornaments:

We have different decorations, including ribbons and straps to combine with anyone of our references



Gambler Hat



Monaco Hat

Characteristics:

Half brim hat between 8 to 8.5 cm (wing size)
Available tone: white, brown and beige

Big brimmed hat 10.5cm (wing size)
Available tone; beige

Cup 11.5 cm

Measurements between sizes:

S 54cm - 55cm

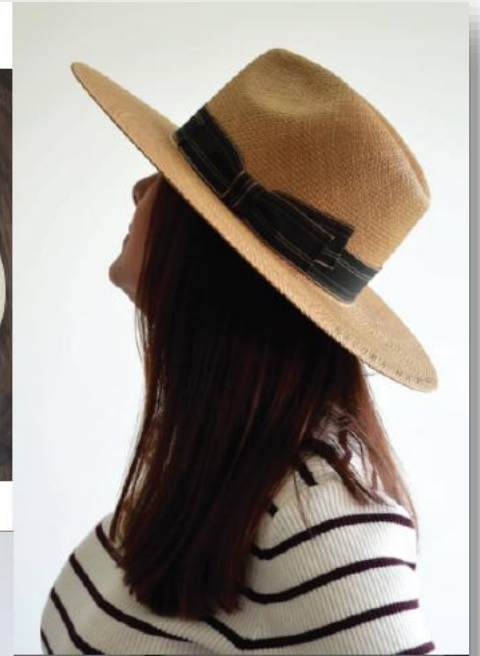
M 55.5cm - 56.5cm

L 57cm - 58.5cm

XL 59cm - 60cm

Ornaments:

We have different decorations, including ribbons and straps to combine with anyone of our references



Monaco Hat



Cordobes Hat

Characteristics:

Half brim hat between 8 to 8.5 cm (wing size)
Available tone: white, brown and beige

Big brimmed hat 10.5cm (wing size)
Available tone; beige

Cup 11.5 cm

Measurements between sizes:

S 54cm - 55cm

M 55.5cm - 56.5cm

L 57cm - 58.5cm

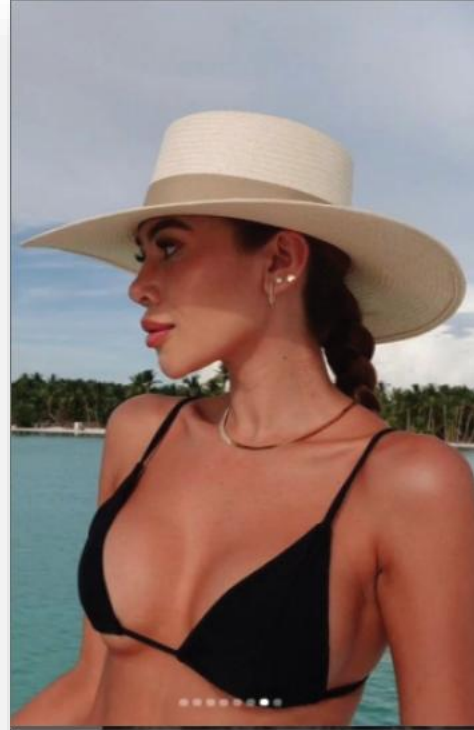
XL 59cm - 60cm

Ornaments:

We have different decorations, including ribbons and straps to combine with anyone of our references



Cordobes Hat



Cubano Hat

Characteristics:

Small brimmed hat between 5 (wing size)

Available tone: white, brown and beige

Cup 11.5 cm

Measurements between sizes:

S 54 cm - 55 cm

M 55.5 cm - 56.5 cm

L 57 cm - 58.5 cm

XL 59 cm - 60 cm

Ornaments:

We have different decorations, including ribbons and straps to combine with anyone of our references



Borsalino Hat

Characteristics:

Half brim hat between 8 to 8.5 cm (wing size)

Available tone: white, brown and beige

Cup 11.5 cm

Measurements between sizes:

S 54cm - 55cm

M 55.5cm - 56.5cm

L 57cm - 58.5cm

XL 59cm - 60cm

Ornaments:

We have different decorations, including ribbons and straps to combine with anyone of our references



Borsalino Hat



Rebelde Hat

Characteristics:

Big brimmed hat 10 cm (wing size)

Available tone; beige

Cup 11.5 cm

Measurements between sizes:

S 54cm - 55cm

M 55.5cm - 56.5cm

L 57cm - 58.5cm

XL 59cm - 60cm

Ornaments:

We have different decorations, including leather ribbons and straps to combine with any of our references



Bonanza Hat

Characteristics:

Big brimmed hat 12 cm (wing size)

Available tone; beige

Cup 11.5 cm

Measurements between sizes:

S 54cm - 55cm

M 55.5cm - 56.5cm

L 57cm - 58.5cm

XL 59cm - 60cm

Ornaments:

We have different decorations, including ribbons and straps to combine with anyone of our references



Join us in working to grow our country and foster a sense of belonging to what is ours. Discover the variety and quality of Colombian products, which are undoubtedly unique, fascinating, and highly competitive in the international market.



CONTACT



Facebook: Verval Import & Export

Instagram: @vervalcomex

LinkedIn: @vervalcomex



gerencia@verval.com.co



+57 318 1542811

